

PRODUCT INFORMATION

GMP® IL-4 (Interleukin-4), Human

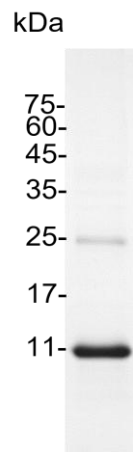
v. 250301

Catalog number	C01006-GMP-1000
Package	1 mg
Description	The interleukin-4 (IL-4) is a cytokine that induces differentiation of naive helper T cells (Th0 cells) to Th2 cells. Upon activation by IL-4, Th2 cells subsequently produce additional IL-4 in a positive feedback loop. The cell that initially produces IL-4, thus inducing Th2 differentiation, has not been identified, but recent studies suggest that basophils may be the effector cell. It is closely related and has functions similar to IL-13.
Expression System	<i>Escherichia coli</i>
Species of Origin	Human
Affinity Tag	His Tag (C-term)
Sequence	His25-Ser153
Endotoxin level	<0.05 EU per 1 µg of the protein by the LAL method.
Activity	Measure by its ability to induce TF-1 cells proliferation. The ED ₅₀ for this effect is <0.2 ng/mL. The specific activity of recombinant human IL-4 is approximately >2.8 x 10 ⁷ IU/mg.
Purity	>98% as determined by SDS-PAGE analysis.
Mycoplasma	Not detected
Form	Lyophilized
Storage Buffer	Lyophilized from a 0.2 µm filtered solution of PBS, pH 8.0.
Reconstitution	It is recommended to reconstitute the lyophilized protein in sterile H ₂ O to a concentration not less than 0.5 mg/mL and incubate the stock solution for at least 20 min to ensure sufficient re-dissolved .
Stability & Storage	This product is stable after storage at: <ul style="list-style-type: none"> • -20°C for 12 months in lyophilized state from date of receipt. • -20°C or -80°C for 1 month under sterile conditions after reconstitution. Avoid repeated freeze/thaw cycles.
Specification	Croyez GMP® recombinant proteins are manufactured in ISO 13485:2016 and GMP-certified facility. The processes include:

-
- Animal-free reagent and laboratory
 - Manufactured and tested under GMP guideline
 - Testing and traceability of raw material
 - Records of the maintenance and equipment calibration
 - Personnel training records
 - Batch-to-batch consistency
 - Documentation of QA control and process changes
 - Manufactured and tested under an ISO 13485:2016 certified quality management system
 - Stability monitor of product shelf-life
-

Reference

1. Junttila IS. (2018) *Front Immunol.* 9: 888.
 2. Ho IC, Miaw SC. (2016) *Adv Exp Med Biol.* 941: 31-77.
 3. Brown MA, Hural J. (2017) *Crit Rev Immunol.* 37,2-6: 181-212.
 4. Luzina, IG. et al. (2012) *J Leukoc Biol.* 92,4: 753-64.
-



SDS-PAGE analysis of GMP® IL-4, Human

For Research Use Only. Not for use in diagnostic or therapeutic procedures.