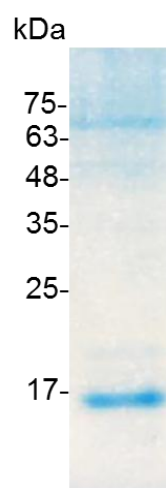


PRODUCT INFORMATION

**IL-15 (Interleukin-15), Human**

v. 250201

<b>Catalog number</b>	C01017-5UG / C01017-20UG / C01017-100UG
<b>Package</b>	5 µg / 20 µg / 100 µg
<b>Description</b>	Interleukin-15 (IL-15) is a cytokine with structural similarity to Interleukin-2 (IL-2). Like IL-2, IL-15 binds to and signals through a complex composed of IL-2/IL-15 receptor beta chain (CD122) and the common gamma chain (gamma-C, CD132). IL-15 is secreted by mononuclear phagocytes (and some other cells) following infection by virus(es). This cytokine induces cell proliferation of natural killer cells; cells of the innate immune system whose principal role is to kill virally infected cells.
<b>Source</b>	<i>Escherichia coli</i>
<b>Sequence</b>	NWVNVISDLKKIEDLIQSMHIDATLYTESDVHPSCKVTAMKCFLLELQVISLESG DASIHDTVENLIILANNSLSSNGNVTESGCKECEELEEKNIKEFLQSFVHIVQMFI NTS with polyhistidine tag at the N-terminus
<b>Endotoxin level</b>	<0.01 EU per 1 µg of the protein by the LAL method.
<b>Activity</b>	Measure by its ability to induce proliferation in CTLL-2 cells. The ED <sub>50</sub> for this effect is < 3 ng/mL. The specific activity of recombinant human IL-15 is approximately 2.5 x 10 <sup>7</sup> IU/mg.
<b>Purity</b>	>98% as determined by SDS-PAGE.
<b>Form</b>	Lyophilized
<b>Storage Buffer</b>	Lyophilized from a 0.2 µm filtered solution of NaPi buffer, 0.018% SDS, pH 7.5.
<b>Reconstitution</b>	It is recommended to reconstitute the lyophilized protein in sterile H <sub>2</sub> O to a concentration not less than 200 µg/mL and incubate the stock solution for at least 20 min to ensure sufficient re-dissolved.
<b>Stability &amp; Storage</b>	This product is stable after storage at: <ul style="list-style-type: none"> <li>-20°C for 12 months in lyophilized state from date of receipt.</li> <li>-20°C or -80°C for 6 months under sterile conditions after reconstitution.</li> </ul> Avoid repeated freeze/thaw cycles.



SDS-PAGE analysis of recombinant human IL-15

*For research use only.*