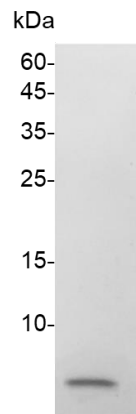


Recombinant Human Insulin Protein

v. 240401

Catalog number	C01200-1G
Package	1 g
Description	Insulin, a crucial peptide hormone secreted by pancreatic β cells, plays a vital role in regulating blood sugar levels and metabolism. Recombinant Human insulin, produced in <i>E. coli</i> , is a non-glycosylated polypeptide chain with a molecular mass of 5.81 kDa. It regulates carbohydrate, protein, and lipid metabolism, promoting glucose transport, glycogen storage, and protein synthesis. Insulin deficiency leads to diabetes mellitus, while it's also present in β -cell tumors like insulinoma.
Source	<i>Escherichia coli</i>
Affinity Tag	Tag Free
Endotoxin level	<0.1 EU per 1 μ g of the protein by the LAL method.
Purity	>95% as determined by SDS-PAGE.
Form	Lyophilized
Storage Buffer	Lyophilized from a 0.2 μ m filtered solution of PBS, pH 8.0.
Reconstitution	It is recommended to reconstitute the lyophilized protein in sterile 10 mM HCl to a concentration not more than 1-2 mg/mL and incubate the stock solution for at least 20 min to ensure sufficient re-dissolved.
Stability & Storage	This product is stable after storage at: <ul style="list-style-type: none">• -20°C for 12 months in lyophilized state from date of receipt.• -20°C or -80°C for 1 month under sterile conditions after reconstitution. Avoid repeated freeze/thaw cycles.



SDS-PAGE analysis of recombinant human insulin protein

For research use only.