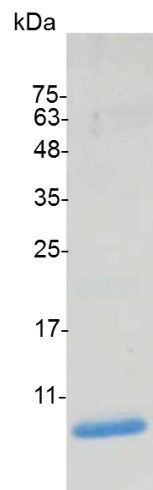


CXCL2 (C-X-C motif chemokine 2), Mouse

v. 231101

Catalog number	C02074-5UG / C02074-20UG / C02074-100UG
Package	5 µg / 20 µg / 100 µg
Description	CXCL2 is an ELR CXC chemokine. The structural and functional characteristics of CSCL2 have relationship with with GRO1 (CXCL1), GRO3 (CXCL3), and interleukin-8 (CXCL8). It is produced by activated monocytes, neutrophils and macrophages. In addition, it also expresses at sites of inflammation. It has been detected that CXCL2 is highly expressed in serum of patients with the disease “esophageal squamous cell carcinoma” (ESCC).
Source	<i>Escherichia coli</i>
Sequence	AVVASELRCQCLKTLPRVDFKNIQSLSVTPPGPHCAQTEVIATLKGGQKVCLDP EAPLVQKIIQKILNKGKAN with polyhistidine tag at the N-terminus
Endotoxin level	<0.1 EU per 1 µg of the protein by the LAL method.
Activity	Measure by its ability to chemoattract BaF3 cells transfected with human CXCR2. The ED ₅₀ for this effect is <0.5 ng/mL.
Purity	>98% as determined by SDS-PAGE.
Form	Lyophilized
Storage Buffer	Lyophilized from a 0.2 µm filtered solution of PBS, pH 7.4.
Reconstitution	It is recommended to reconstitute the lyophilized protein in sterile H ₂ O to a concentration not less than 200 µg/mL and incubate the stock solution for at least 20 min to ensure sufficient re-dissolved.
Stability & Storage	This product is stable after storage at: <ul style="list-style-type: none"> -20°C for 12 months in lyophilized state from date of receipt. -20°C or -80°C for 1 month under sterile conditions after reconstitution. Avoid repeated freeze/thaw cycles.



SDS-PAGE analysis of recombinant mouse CXCL2

For Research Use Only.