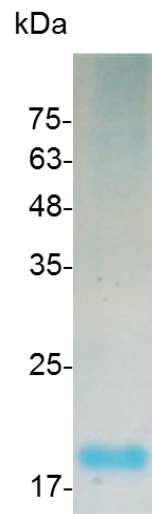


M-CSF (Macrophage colony-stimulating factor), Mouse

v. 231101

Catalog number	C02065-5UG / C02065-20UG / C02065-100UG
Package	5 µg / 20 µg / 100 µg
Description	<p>Macrophage Colony-Stimulating Factor (M-CSF), is a secreted cytokine which causes hematopoietic stem cells to differentiate into macrophages or other related cell types. The active form of M-CSF/CSF-1 is found extracellularly as a disulfide-linked homodimer, and is thought to be produced by proteolytic cleavage of membrane-bound precursors. M-CSF/CSF-1 induces cells of the monocyte/macrophage lineage. It also plays a role in immunological defenses, bone metabolism, lipoproteins clearance, fertility and pregnancy. Upregulation of M-CSF/CSF-1 in the infarcted myocardium may have an active role in healing not only through its effects on cells of monocyte/macrophage lineage, but also by regulating endothelial cell chemokine expression.</p>
Source	<i>Escherichia coli</i>
Sequence	<p>MKEVSEHC SHMIGNH LKVLQQLIDSQMETSCQIAFEFVDQEQLDDPVCYLKK AFFLVQDIIDETMRFKDNTPNANATERLQELSNLNSCFTKDYEEQNKACVRTF HETPLQLLEKIKNFFNETKNLLEKDWNIFTKNCNNSFAKCSSRDVVTKP with polyhistidine tag at the C-terminus</p>
Endotoxin level	<0.1 EU per 1 µg of the protein by the LAL method.
Activity	<p>Measure by its ability to induce proliferation in NFS-60 cells. The ED₅₀ for this effect is <2 ng/mL. The specific activity of recombinant mouse M-CSF is approximately >5x 10⁵ IU/mg.</p>
Purity	>98% as determined by SDS-PAGE.
Form	Lyophilized
Storage Buffer	Lyophilized from a 0.2 µm filtered solution of PBS, pH 8.0.
Reconstitution	<p>It is recommended to reconstitute the lyophilized protein in sterile H₂O to a concentration not less than 200 µg/mL and incubate the stock solution for at least 20 min to ensure sufficient re-dissolved.</p>
Stability & Storage	<p>This product is stable after storage at:</p> <ul style="list-style-type: none"> -20°C for 12 months in lyophilized state from date of receipt. -20°C or -80°C for two weeks under sterile conditions after reconstitution. <p>Avoid repeated freeze/thaw cycles.</p>



SDS-PAGE analysis of recombinant mouse M-CSF

For Research Use Only.