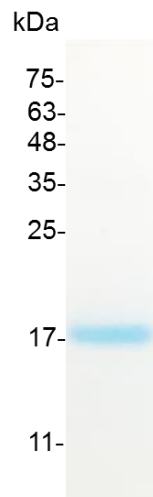


PRODUCT INFORMATION

**GM-CSF (Granulocyte-macrophage colony-stimulating factor),
Mouse**

v. 231101

Catalog number	C02064-5UG / C02064-20UG / C02064-100UG
Package	5 µg / 20 µg / 100 µg
Description	Granulocyte-macrophage colony-stimulating factor (GM-CSF), also known as colony-stimulating factor 2 (CSF2), is a monomeric glycoprotein secreted by macrophages, T cells, mast cells, natural killer cells, endothelial cells and fibroblasts that functions as a cytokine. GM-CSF also plays a role in embryonic development by functioning as an embryokine produced by reproductive tract.
Source	<i>Escherichia coli</i>
Sequence	APTRSPITVTRPWKHVEAIKEALNLLDDMPVTLNEEVEVVSNEFSFKKLTVCVQTRLKIFEQGLRGNFTKCLKGALNMTASYQQTYCPPTPETDCETQVTTYADFIDSLKTFLTDPFECKKPVQK with polyhistidine tag at the N-terminus
Endotoxin level	<0.1 EU per 1 µg of the protein by the LAL method.
Activity	Measure by its ability to induce proliferation in FDC-P1 cells. The ED ₅₀ for this effect is <50 pg/mL. The specific activity of recombinant mouse GM-CSF is approximately >2x 10 ⁷ IU/mg.
Purity	>98% as determined by SDS-PAGE.
Form	Lyophilized
Storage Buffer	Lyophilized from a 0.2 µm filtered solution of PBS, pH 7.4.
Reconstitution	It is recommended to reconstitute the lyophilized protein in sterile H ₂ O to a concentration not less than 200 µg/mL and incubate the stock solution for at least 20 min to ensure sufficient re-dissolved.
Stability & Storage	This product is stable after storage at: <ul style="list-style-type: none"> -20°C for 12 months in lyophilized state from date of receipt. -20°C or -80°C for 1 month under sterile conditions after reconstitution. Avoid repeated freeze/thaw cycles.



SDS-PAGE analysis of recombinant mouse GM-CSF

For Research Use Only.