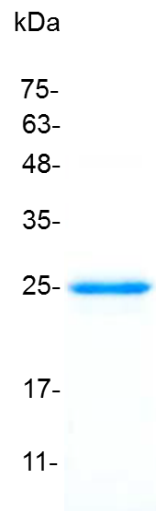


IL-27 EBI3 (Interleukin-27 EBI3), Mouse

v. 231101

Catalog number	C02030-5UG / C02030-20UG / C02030-100UG
Package	5 µg / 20 µg / 100 µg
Description	<p>IL-27 protein is a member of the IL-6 superfamily, which is expressed on monocytes, endothelial cells and dendritic cells. It is also referred to as the IL-12 p35-related protein. IL-27 protein is an early product of activated antigen-presenting cells and drives rapid clonal expansion of naive CD4(+) T cells and plays a role in the early regulation of Th1 cells initiation which drives efficient adaptive immune response. It has an antiproliferative activity on melanomas through WSX-1/STAT1 signaling. Thus, IL-27 protein may be an attractive candidate as an antitumor agent applicable to cancer immunotherapy.</p>
Source	<i>Escherichia coli</i>
Sequence	<p>MALVALSQPRVQCHASRYPVAVDCSWTPLQAPNSTRSTSFIATYRLGVATQQQ SQPCLQRSPQASRCTIPDVHLFSTVPYMLNVTAVHPGGASSLLAFVAERIIKP DPPEGVRLRTAGQRLQVLWHPASWPFDPDIFSLKYRLRYRRRGASHFRQVGPI EATFTLRNSKPHAKYCIQVSAQDLTDYGKPSDWSLPGQVESAPHKP with polyhistidine tag at the C-terminus</p>
Endotoxin level	<0.1 EU per 1 µg of the protein by the LAL method.
Activity	Measure by its ability to protect HepG2 cells infected with encephalomyocarditis (EMC) virus. The ED ₅₀ for this effect is <5 ng/mL.
Purity	>95% as determined by SDS-PAGE.
Form	Lyophilized
Storage Buffer	Lyophilized from a 0.2 µm filtered solution containing 20 mM sodium citrate and 0.2 M NaCl, pH 4.5.
Reconstitution	It is recommended to reconstitute the lyophilized protein in sterile H ₂ O to a concentration not less than 200 µg/mL and incubate the stock solution for at least 20 min to ensure sufficient re-dissolved.
Stability & Storage	<p>This product is stable after storage at:</p> <ul style="list-style-type: none"> -20°C for 12 months in lyophilized state from date of receipt. -20°C or -80°C for 1 month under sterile conditions after reconstitution. <p>Avoid repeated freeze/thaw cycles.</p>



SDS-PAGE analysis of recombinant mouse IL-27 EBI3

For Research Use Only.