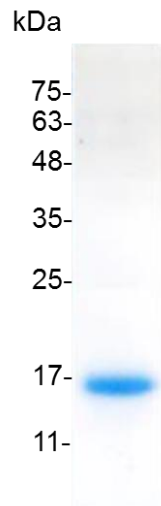


**IL-21 (Interleukin-21), Mouse**

v. 231101

<b>Catalog number</b>	C02025-5UG / C02025-20UG / C02025-100UG
<b>Package</b>	5 µg / 20 µg / 100 µg
<b>Description</b>	Interleukin-21 (IL21) belongs to the IL-15/IL-21 family. It is a cytokine with immunoregulatory activity. Cytokines are proteinaceous signaling compounds that are major mediators of the immune response. They control many different cellular functions including proliferation, differentiation and cell survival/apoptosis but are also involved in several pathophysiological processes including viral infections and autoimmune diseases. Interleukin-21 is a cytokine that has potent regulatory effects on cells of the immune system, including natural killer (NK) cells and cytotoxic T cells that can destroy virally infected or cancerous cells. This cytokine induces cell division/proliferation in its target cells.
<b>Source</b>	<i>Escherichia coli</i>
<b>Sequence</b>	MHKSSPQGPDRLRLRHLIDIVEQLKIYENDLDPELLSAPQDVKGHCHEHAAFAC FQKAKLKPSNPGNNKTFIIDLVAQLRRRLPARRGGKKQKHIKPCSCDSYEKRT PKEFLERLKWLLQKMIHQHLS with polyhistidine tag at the C-terminus
<b>Endotoxin level</b>	<0.1 EU per 1 µg of the protein by the LAL method.
<b>Activity</b>	Measure by its ability to enhance IFN gamma secretion in NK-92 cells. The ED <sub>50</sub> for this effect is <6 ng/mL. The specific activity of recombinant mouse IL-21 is > 1.6 x 10 <sup>5</sup> IU/mg.
<b>Purity</b>	>95% as determined by SDS-PAGE.
<b>Form</b>	Lyophilized
<b>Storage Buffer</b>	Lyophilized from a 0.2 µm filtered solution of PBS, pH 7.4.
<b>Reconstitution</b>	It is recommended to reconstitute the lyophilized protein in sterile H <sub>2</sub> O to a concentration not less than 200 µg/mL and incubate the stock solution for at least 20 min to ensure sufficient re-dissolved.
<b>Stability &amp; Storage</b>	<p>This product is stable after storage at:</p> <ul style="list-style-type: none"> <li>-20°C for 12 months in lyophilized state from date of receipt.</li> <li>-20°C or -80°C for 1 month under sterile conditions after reconstitution.</li> </ul> <p>Avoid repeated freeze/thaw cycles.</p>



SDS-PAGE analysis of recombinant mouse IL-21

*For Research Use Only.*