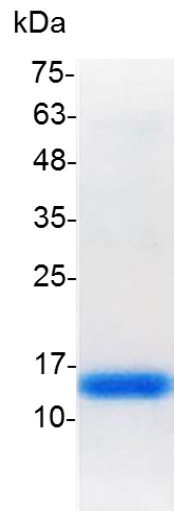


## PRODUCT INFORMATION

**Galectin-1, Human**

v. 231001

<b>Catalog number</b>	C01156-5UG / C01156-20UG / C01156-100UG
<b>Package</b>	5 µg / 20 µg / 100 µg
<b>Description</b>	<p>The galectin-1 protein is 135 amino acids in length and highly conserved across species. It can be found in the nucleus, the cytoplasm, the cell surface and in the extracellular space. Galectins, in general, lack a traditional signal sequence but are still secreted across the plasma membrane. Although galectins in general, and Gal-1 in particular, were first described as lectins that bind β-galactosides, it is now clear from the literature that as well as being a lectin, Gal-1 is also engaged in many protein-protein interactions. Gal-1 plays a number of crucial roles in neuronal cell differentiation and survival in both the central and the peripheral nervous systems, and the establishment and maintenance of T-cell tolerance and homeostasis in vivo.</p>
<b>Source</b>	<i>Escherichia coli</i>
<b>Sequence</b>	ACGLVASNLNLKPGDECLRVRGEVAPDAKSFVLNLGKDSNNLCLHFNPRFNAHG DANTIVCNSKDGGAWGTEQREAVFPFQPGSVAEVCITFDQANLTVKLPDGYEF KFPNRLNLEAINYMAADGDFKIKCVAFD with polyhistidine tag at the N-terminus
<b>Endotoxin level</b>	<0.1 EU per 1 µg of the protein by the LAL method.
<b>Activity</b>	Measured by its ability to agglutinate human red blood cells. The ED <sub>50</sub> for this effect is <2 µg/mL.
<b>Purity</b>	>98% as determined by SDS-PAGE.
<b>Form</b>	Lyophilized
<b>Storage Buffer</b>	Lyophilized from a 0.2 µm filtered solution of PBS, pH 7.4.
<b>Reconstitution</b>	It is recommended to reconstitute the lyophilized protein in sterile H <sub>2</sub> O to a concentration not less than 200 µg/mL and incubate the stock solution for at least 20 min to ensure sufficient re-dissolved.
<b>Stability &amp; Storage</b>	<p>This product is stable after storage at:</p> <ul style="list-style-type: none"> <li>-20°C for 12 months in lyophilized state from date of receipt.</li> <li>-20°C or -80°C for 1 month under sterile conditions after reconstitution.</li> </ul> <p>Avoid repeated freeze/thaw cycles.</p>



SDS-PAGE analysis of recombinant human Galectin-1

*For research use only.*