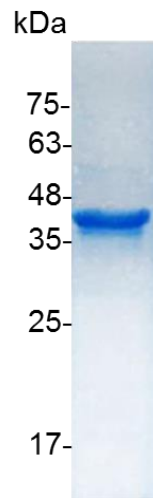


CHI3L1 (Chitinase-3-like protein 1), Human

v. 231001

Catalog number	C01146-5UG / C01146-20UG / C01146-100UG
Package	5 µg / 20 µg / 100 µg
Description	<p>Chitinase-3-like protein 1 (CHI3L1), also known as YKL-40, is a secreted glycoprotein that is approximately 40kDa in size that in humans is encoded by the CHI3L1 gene. Elevated levels of CHI3L1 are associated with disorders exhibiting increased connective tissue turnover, such as rheumatoid, arthritis, osteoarthritis, scleroderma, and cirrhosis of liver, but is produced in cartilage from old donors or patients with osteoarthritis. CHI3L1 is abnormally expressed in the hippocampus of subjects with schizophrenia and may be involved in the cellular response to various environmental events that are reported to increase the risk of schizophrenia.</p>
Source	<i>Escherichia coli</i>
Sequence	<p>MYKLVCYYTSWSQYREGDGSCFPDALDRFLCTHIIYSFANISNDHIDTWEWND VTLYGMLNTLKNRNPNLKTLSSVGGWNFGSQRFSKIASNTQSRRTFIKSVPPFL RTHGFDGLDLAWLYPGRRDQHFHTTLIKEMKAEFIKEAQP GK KQLLLSAALSAG KVTIDSSYDIAKISQHLD FISIMTYDFHGAWRGT TGHHSPLFRGQEDASPDRFS NTDYAVGYMLRLGAPASKLVMGIPTFGRSFTLASSETGVGAPISGPGIPGRFTK EAGTLAYYEICDFLRGATVHRILGQQVPYATKGNQWVG YDDQESVKSQVQYLK DRQLAGAMVWALDLDLDFQGSFCGQDLRFP L TNAIKDALAAT with polyhistidine tag at the C-terminus</p>
Endotoxin level	<0.1 EU per 1 µg of the protein by the LAL method.
Purity	>98% as determined by SDS-PAGE.
Form	Lyophilized
Storage Buffer	Lyophilized from a 0.2 µm filtered solution of PBS, pH 7.4.
Reconstitution	<p>It is recommended to reconstitute the lyophilized protein in sterile H₂O to a concentration not less than 200 µg/mL and incubate the stock solution for at least 20 min to ensure sufficient re-dissolved.</p>
Stability & Storage	<p>This product is stable after storage at:</p> <ul style="list-style-type: none"> -20°C for 12 months in lyophilized state from date of receipt. -20°C or -80°C for 1 month under sterile conditions after reconstitution. <p>Avoid repeated freeze/thaw cycles.</p>



SDS-PAGE analysis of recombinant human CHI3L1

For research use only.