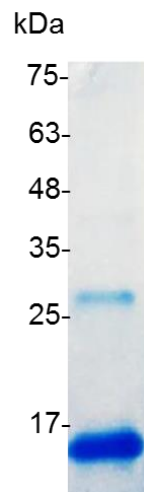


**BMP-10 (Bone morphogenetic protein-10), Human**

v. 231001

|                                |  |
|--------------------------------|--|
| <b>Catalog number</b>          | C01071-5UG / C01071-20UG / C01071-100UG  |
| <b>Package</b>                 | 5 µg / 20 µg / 100 µg  |
| <b>Description</b>             | BMP-10 is a polypeptide belonging to the TGF-β superfamily of proteins. It is a novel protein that, unlike most other BMP's, is likely to be involved in the trabeculation of the heart. BMP-10 is categorized as a BMP since it shares large sequence homology with other BMP's in the TGF-β superfamily. |
| <b>Source</b>                  | <i>Escherichia coli</i>  |
| <b>Sequence</b>                | MNAKGN YCKRTP LYIDFKEIGWDSWIIAPPGYEAYE CRGVCNYPLAEHLTPTKH<br>AIIQALVHLKNSQKASKACCVPTKLEPISILYLDKGVVITYKFKYEGMAVSECGCR<br>with polyhistidine tag at the C-terminus  |
| <b>Endotoxin level</b>         | <0.1 EU per 1 µg of the protein by the LAL method.   |
| <b>Activity</b>                | Measure by its ability to induce alkaline phosphatase production by ATDC5 cells. The ED <sub>50</sub> for this effect is 1.7-2.1 ng/mL.  |
| <b>Purity</b>                  | >98% as determined by SDS-PAGE.  |
| <b>Form</b>                    | Lyophilized  |
| <b>Storage Buffer</b>          | Lyophilized from a 0.2 µm filtered solution containing 20 mM sodium citrate and 0.2 M NaCl, pH 3.5.  |
| <b>Reconstitution</b>          | It is recommended to reconstitute the lyophilized protein in 4 mM HCl to a concentration not less than 200 µg/mL and incubate the stock solution for at least 20 min to ensure sufficient re-dissolved.  |
| <b>Stability &amp; Storage</b> | This product is stable after storage at: <ul style="list-style-type: none"> <li>-20°C for 12 months in lyophilized state from date of receipt.</li> <li>-20°C or -80°C for 1 month under sterile conditions after reconstitution.</li> </ul> Avoid repeated freeze/thaw cycles.                            |



SDS-PAGE analysis of recombinant human BMP-10

*For research use only.*