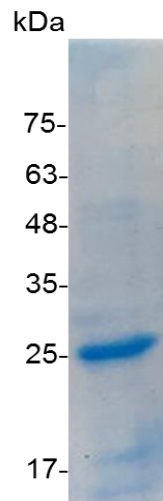


IL-27 EBI3 (Interleukin-27 EBI3), Human

v. 230901

Catalog number	C01032-5UG / C01032-20UG / C01032-100UG
Package	5 µg / 20 µg / 100 µg
Description	<p>IL-27 protein is a member of the IL-6 superfamily, which is expressed on monocytes, endothelial cells and dendritic cells. It is also referred to as the IL-12 p35-related protein. IL-27 protein is an early product of activated antigen-presenting cells and drives rapid clonal expansion of naive CD4(+) T cells and plays a role in the early regulation of Th1 cells initiation which drives efficient adaptive immune response. It has an antiproliferative activity on melanomas through WSX-1/STAT1 signaling. Thus, IL-27 protein may be an attractive candidate as an antitumor agent applicable to cancer immunotherapy.</p>
Expression System	<i>Escherichia coli</i>
Species of Origin	Human
Affinity Tag	His Tag (C-term)
Sequence	Arg21-Lys229
Endotoxin level	<0.1 EU per 1 µg of the protein by the LAL method.
Activity	Measure by its ability to induce TF-1 cells proliferation using a concentration range of 20-200 ng/mL.
Purity	>95% as determined by SDS-PAGE.
Form	Lyophilized
Storage Buffer	Lyophilized from a 0.2 µm filtered solution of PBS, pH 8.0.
Reconstitution	It is recommended to reconstitute the lyophilized protein in sterile H ₂ O to a concentration not less than 200 µg/mL and incubate the stock solution for at least 20 min to ensure sufficient re-dissolved.
Stability & Storage	<p>This product is stable after storage at:</p> <ul style="list-style-type: none">• -20°C for 12 months in lyophilized state from date of receipt.• -20°C or -80°C for 1 month under sterile conditions after reconstitution. <p>Avoid repeated freeze/thaw cycles.</p>



SDS-PAGE analysis of recombinant human IL-27 EBI3

For research use only.