

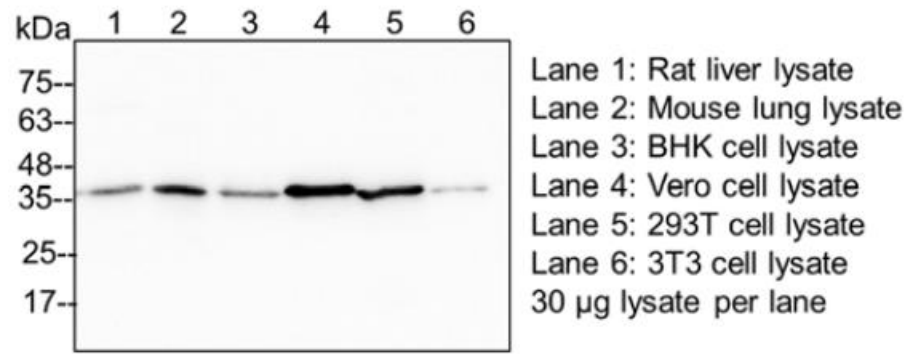
PRODUCT INFORMATION

Mouse anti-GAPDH mAb, clone 38-1

v. 230201

Catalog number	C06012-100UL / C06012-1000UL	
Package	100 μ L / 1000 μ L	
Description	Glyceraldehyde-3-phosphate dehydrogenase (GAPDH) is a catalytic enzyme in glycolysis. GAPDH exists as a tetramer of 37 kDa and is expressed at high level in most tissues. It is useful as internal control in western blotting.	
Product type	Monoclonal, clone 38-1	
Concentration	1 mg/mL	
Immunogen	Recombinant GAPDH protein	
Host	Mouse	
Reactivity	Mouse, rat, human, hamster, monkey	
Conjugation	N/A	
Isotype	IgG2b Kappa	
Purity	>95% (SDS-PAGE)	
Form	Liquid	
Storage buffer	Phosphate Buffered Saline containing 0.01% thimerosal, pH 7.4.	
Storage	Store at 4°C for two weeks. Store at -20°C for one year. Avoid repeated freeze/thaw cycles.	
Application	ELISA, WB, IFA	
Application Note	N/A	
Manual	Application	Dilution factor
	ELISA	1:5000-20000
	WB	1:1000-10000
	IFA	1:200-1000
Note: Application concentration may be various determined by the end user.		

Data



Western blotting analysis of anti-GAPDH mAb (1:2000)

For Research Use Only.