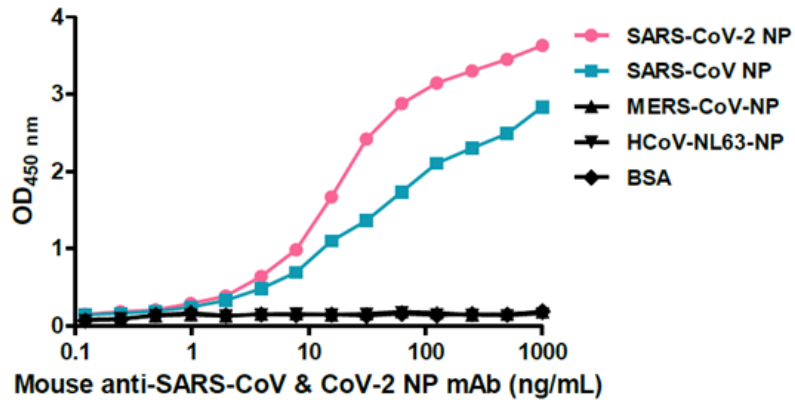


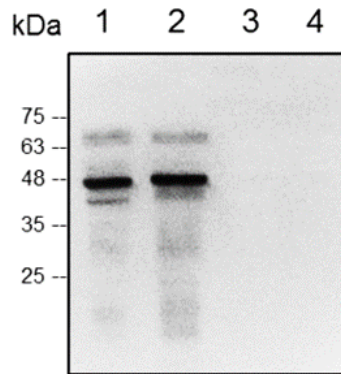
<b>Catalog number</b>	C10011-bulk / C10011-100UG	
<b>Package</b>	Customized package / 100 µg	
<b>Description</b>	<p>Mouse anti-SARS-CoV &amp; CoV-2 NP antibody recognize SARS Coronavirus Nucleocapsid protein (NP). Coronavirus NP localize to the cytoplasm and the nucleolus in both Virus-like particle (VLP) infected primary cells and in cells transfected with NP plasmid. NP has abundant expression in coronavirus and is a highly immunogenic phosphoprotein. NP is also conserved in sequence. Due to these characteristics above, the NP is an ideal marker for diagnosis.</p>	
<b>Product type</b>	Monoclonal, clone 102-7	
<b>Concentration</b>	1 mg/mL	
<b>Reactivity</b>	<p>Recognize SARS-CoV &amp; CoV-2 NP in Lateral Flow, when monoclonal antibody was paired with Mouse anti-SARS-CoV &amp; CoV-2 NP mAb, clone 109-5 (cat. C10012-100UG) or Human anti-SARS-CoV &amp; CoV-2 NP Antibody (IgG) (cat. C10004-100UG).</p> <p>Recognize SARS-CoV &amp; CoV-2 NP in ELISA, when monoclonal antibody was paired with Mouse anti-SARS-CoV &amp; CoV-2 NP mAb, clone 109-5 (cat. C10012-100UG).</p>	
<b>Conjugation</b>	N/A	
<b>Isotype</b>	IgG <sub>1</sub>	
<b>Purity</b>	>98% (SDS-PAGE)	
<b>Form</b>	Liquid	
<b>Storage buffer</b>	Phosphate Buffered Saline containing 0.03% Proclin 300, pH 7.4.	
<b>Storage</b>	<p>Store at 4°C for two weeks.</p> <p>Store at -20°C for one year. Avoid repeated freeze/thaw cycles.</p>	
<b>Application</b>	ELISA, WB, IFA	
<b>Application Note</b>	N/A	
<b>Manual</b>	<b>Application</b>	<b>Dilution factor</b>
	ELISA	1:5000-20000
	WB	1:1000-5000
	IFA	1:500-1000

Note: Application concentration may be various determined by the end user.



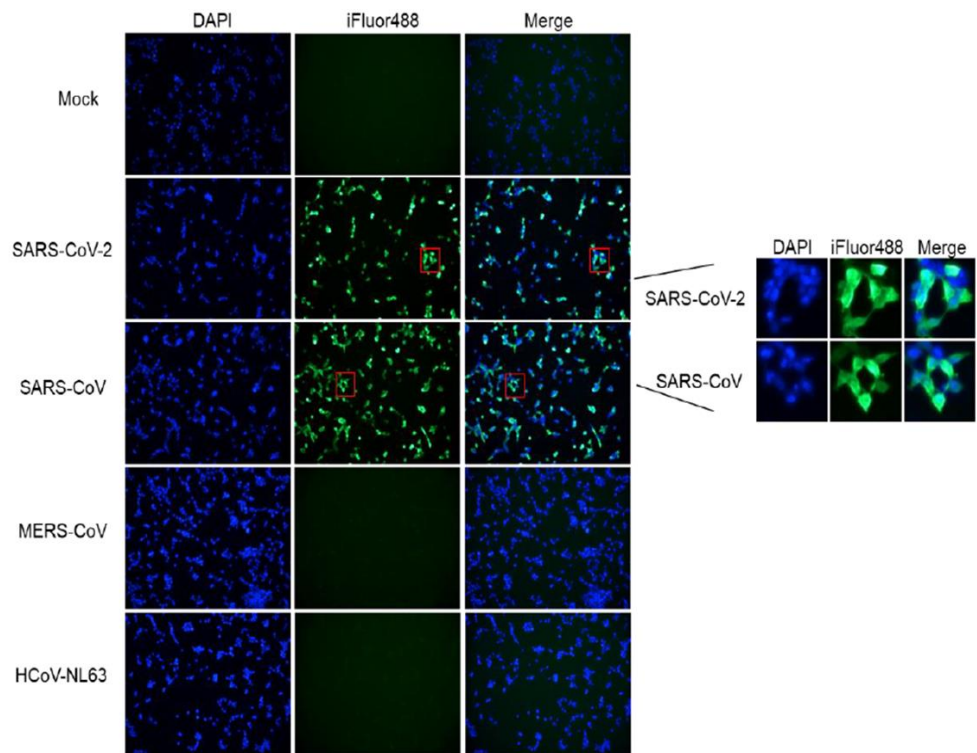
ELISA titration of Mouse anti-SARS-CoV & CoV-2 NP mAb, clone 102-7

Data



Lane 1 : SARS-CoV-2 NP  
 Lane 2 : SARS-CoV NP  
 Lane 3 : MERS-CoV NP  
 Lane 4 : HCoV-NL63 NP

Western blotting analysis of Mouse anti-SARS-CoV & CoV-2 NP mAb, clone 102-7 (1:1000)



Immunofluorescence analysis of Mouse anti-SARS-CoV & CoV-2 NP mAb, clone 102-7 (1:500)

*For Research Use Only.*