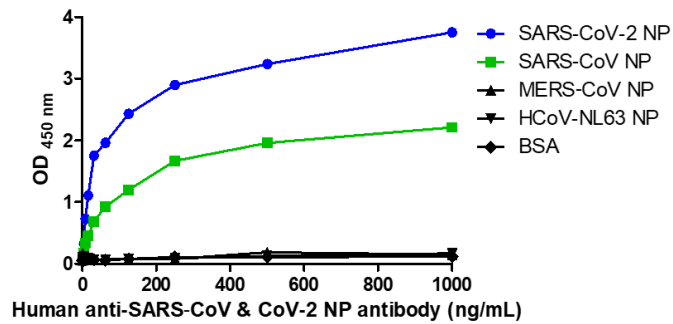


**Human anti-SARS-CoV & CoV-2 NP Antibody (IgG)**

v. 230201

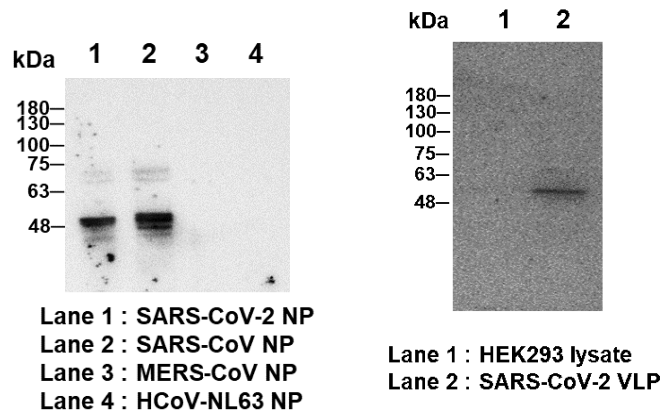
<b>Catalog number</b>	C10004-bulk / C10004-100UG	
<b>Package</b>	Customized package / 100ug	
<b>Description</b>	<p>Human anti-SARS-CoV &amp; CoV-2 NP antibody recognize human SARS Coronavirus Nucleocapsid protein (NP). Coronavirus NP localize to the cytoplasm and the nucleolus in both Virus-like particle (VLP) infected primary cells and in cells transfected with NP plasmid. NP has abundant expression in coronavirus and is a highly immunogenic phosphoprotein. NP is also conserved in sequence. Due to these characteristic above, the NP is an ideal marker for diagnosis.</p>	
<b>Product type</b>	Recombinant Human IgG	
<b>Concentration</b>	1 mg/mL	
<b>Immunogen</b>	N/A	
<b>Host</b>	N/A	
<b>Reactivity</b>	SARS-CoV & CoV-2	
<b>Conjugation</b>	N/A	
<b>Isotype</b>	IgG1	
<b>Purity</b>	>98% (SDS-PAGE)	
<b>Form</b>	Liquid	
<b>Storage buffer</b>	Phosphate Buffered Saline containing 0.03% proclin 300, pH 7.4	
<b>Storage</b>	<p>Store at 4°C for two weeks. Store at -20°C for one year. Avoid repeated freeze/thaw cycles.</p>	
<b>Application</b>	ELISA, WB, IFA, FACS	
<b>Application Note</b>	N/A	
<b>Manual</b>	<b>Application</b>	<b>Dilution factor</b>
	ELISA	1:5000-20000
	WB	1:1000-5000
	IFA	1:500-1000
	FACS	Assay dependent

Note: Application concentration may be various determined by the end user.

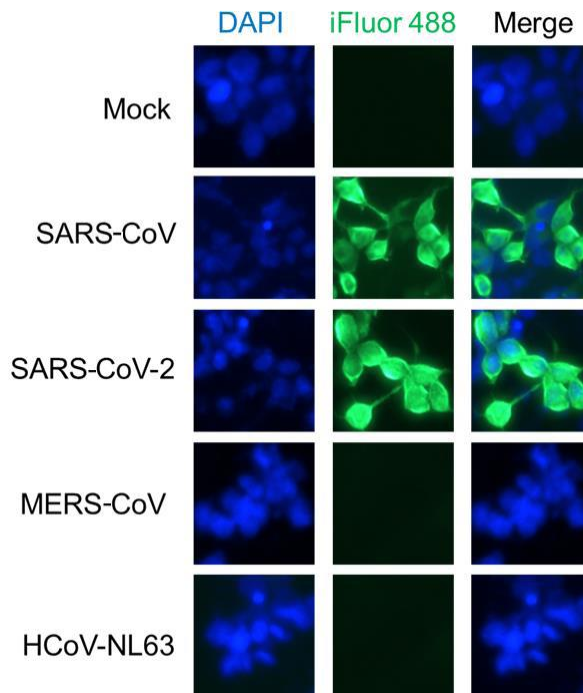


ELISA titration of Human anti-SARS-CoV & CoV-2 NP Antibody (IgG)

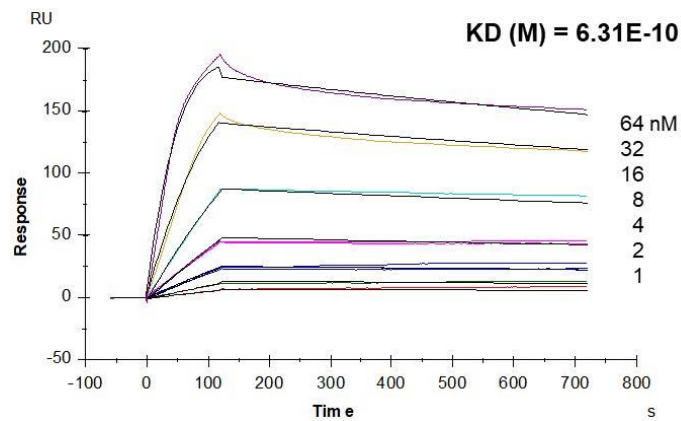
Data



Western blotting analysis of Human anti-SARS-CoV & CoV-2 NP antibody (IgG)  
(1:1000)



Immunofluorescence analysis of Human anti-SARS-CoV & CoV-2 NP Antibody (IgG) (1:500)



Multi-cycle kinetic analysis of Human anti-SARS-CoV & CoV-2 NP Antibody (IgG) to Human SARS CoV-2 Nucleocapsid protein by using Biacore T200.

*For Research Use Only.*