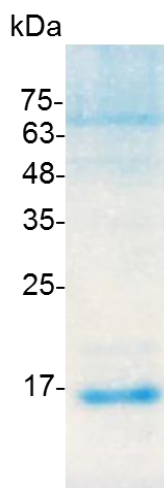


PRODUCT INFORMATION  
**IL-15 (Interleukin-15), Human**

<b>Catalog number</b>	C01017-5UG / C01017-20UG / C01017-100UG
<b>Package</b>	5 µg / 20 µg / 100 µg
<b>Description</b>	Interleukin-15 (IL-15) is a cytokine with structural similarity to Interleukin-2 (IL-2). Like IL-2, IL-15 binds to and signals through a complex composed of IL-2/IL-15 receptor beta chain (CD122) and the common gamma chain (gamma-C, CD132). IL-15 is secreted by mononuclear phagocytes (and some other cells) following infection by virus(es). This cytokine induces cell proliferation of natural killer cells; cells of the innate immune system whose principal role is to kill virally infected cells.
<b>Source</b>	<i>Escherichia coli</i>
<b>Sequence</b>	NWVNVISDLKKIEDLIQSMHIDATLYTESDVHPSCKVTAMKCFLELQVISLESGD ASIHDTVENLILANNSLSSNGNVTESGCKECEEELEEKNIKEFLQSFVHIVQMFIN TSLE with polyhistidine tag at the N-terminus
<b>Endotoxin level</b>	<0.01 EU per 1 µg of the protein by the LAL method.
<b>Activity</b>	Measure by its ability to induce MO7e human megakaryocytic leukemic proliferation. The ED <sub>50</sub> for this effect is 0.5-3 ng/mL. The specific activity of recombinant human IL-15 is approximately 1.5 x 10 <sup>8</sup> IU/mg. Measure by its ability to induce NK cells proliferation. The ED <sub>50</sub> for this effect is 5-35 ng/mL.
<b>Purity</b>	>95% as determined by SDS-PAGE analysis. Purified by Ni-NTA chromatography.
<b>Formulation</b>	The protein was lyophilized from a solution containing 1X PBS, pH 8.0.
<b>Reconstitution</b>	It is recommended to reconstitute the lyophilized protein in sterile H <sub>2</sub> O to a concentration not less than 100 µg/mL and incubate the stock solution for at least 20 min to ensure sufficient re-dissolved.
<b>Storage</b>	Lyophilized protein should be stored at -20°C. This product is stable for one year upon receipt, when handled and stored as instructed. Upon reconstitution, protein aliquots should be stored at -20°C or -80°C. Avoid repeated freeze/thaw cycles.
<b>Note</b>	Please use within one month after protein reconstitution.



SDS-PAGE analysis of recombinant human IL-15

For Research Use Only.